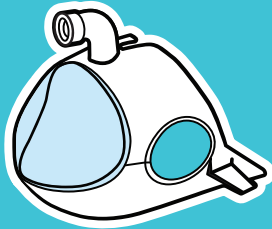


ZhuZhu AQUARIUM™

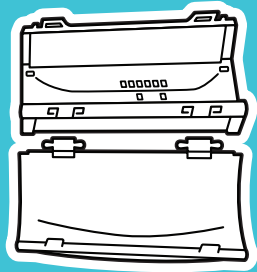
AGE GRADE 4+

This package includes:

1 SUBMARINE



1 CONNECTOR



1 TUNNEL (TWO PARTS)



1 RAMP

Unpacking your ZhuZhu Aquarium™ Submarine & Tunnel

Remove all contents from package and discard any rubber bands, wire ties or other packaging materials that are not part of the product.

Please Note

- Retain these instructions as they contain important information.
- Read all of the instructions before assembling your Submarine.
- Some adult assembly is required.
- The ZhuZhu Aquarium™ Submarine is a toy. It is not intended for use with live animals or in water.

The Submarine is made to be used with ZhuZhu Aquarium™ Fish which are sold separately. The Submarine works best on an open floor.

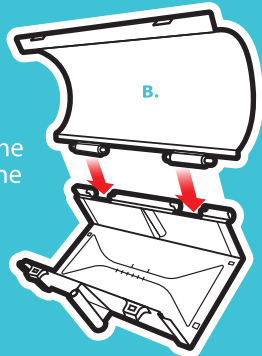
For more information on the ZhuZhu Aquarium™ and other aquarium add-on sets and accessories please go to:

www.zhuzhuaquarium.com

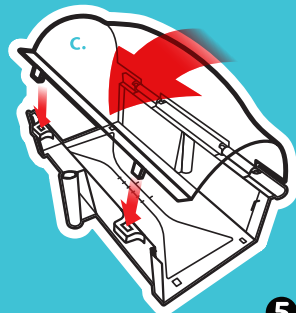
1

2

- B.** To attach the Tunnel top, press one post on the Tunnel top into the hinge notch on the Tunnel base. Snap in the other post.



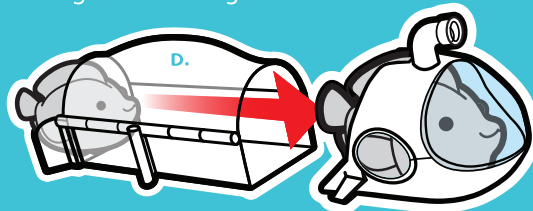
- C.** Close the Tunnel top, noting how the other side of the top snaps into place.



5

- D.** Putting it all together. Position the Submarine in front of the Tunnel.

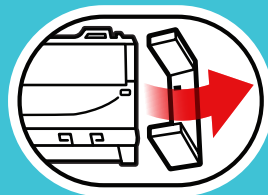
NOTE: Fish will not make specific boat noises and actions without going through the Tunnel via the same direction of the engraved message.



FISH NOT INCLUDED

Disassembly

Removing Ramp or Connector, gently pull apart from the bottom.



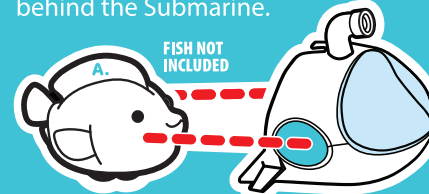
6

Two Ways to Play

The Submarine can be used as a standalone item, or with the Tunnel and connect to other play sets from the world of ZhuZhu Aquarium™.

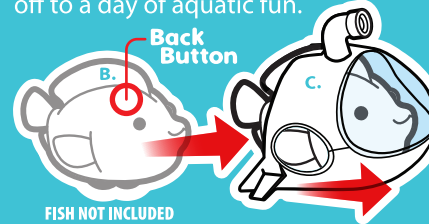
1. Using Fish with Submarine

- A.** Place the Fish on the ground and align it behind the Submarine.



- B.** Press the button on the Fish's back.

- C.** Watch the Fish swim across the floor, board the Submarine, and Zhu-oom off to a day of aquatic fun.



FISH NOT INCLUDED

3

Troubleshooting

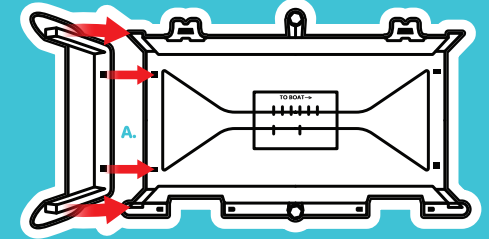
- Designed to act randomly and unpredictably, Fish may not act the same each time.
- If Fish gets stuck entering the Tunnel and Submarine, check all the snaps and connector junctions. Be sure the Submarine is snugly located against the lead edge of the Tunnel.
- Your pet works best on smooth, hard, and even surfaces. It will not work in water, carpet, or other soft surfaces. Do not use in sand or grass.
- The Submarine works best outside the track and other open surfaces.
- If Fish does not move in the Submarine make sure the wheels are still lined up with the openings towards the back of the sub.

7

NOTE: Fish will not make specific Submarine noises and actions without going through the Tunnel via the same direction of the engraved message.

2. Using Submarine with Tunnel

- A.** Attach the Ramp to the opening of the Tunnel **before** the engraved message: **TO SUBMARINE** →. Start at the top and snap the Ramp down into place.



NOTE: The Connector should only be used to connect to other tracks and playsets in the ZhuZhu Aquarium™ line. If used without attaching it to another set, the Connector may interfere with play.

4

• FISH SOLD SEPARATELY!

• DO NOT PUT FISH IN WATER!
• KEEP HAIR AWAY FROM WHEELS!

For Questions and Comments please call:
1-800-225-9319

©2023 Cepia LLC.
St. Louis, Missouri 63124
Made in China

WARNING:
CHOKING HAZARD - Small parts
Not for Children Under 3 Years



WARNING:

All rubber bands and wire ties, as well as tags, are not parts of this toy and should be discarded for your child's safety. Colors and contents may vary from those shown on the package.

Printed in China
REV T12102009 86650

8